

Small Grains

MANDY PAYNE EXHIBITION

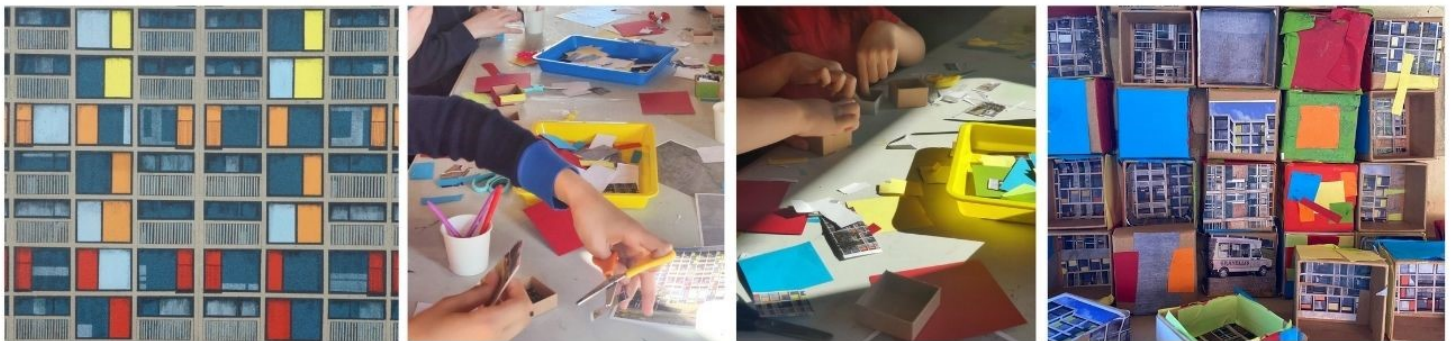
by Kate Romano
CEO & Education Lead,
Stapleford Granary



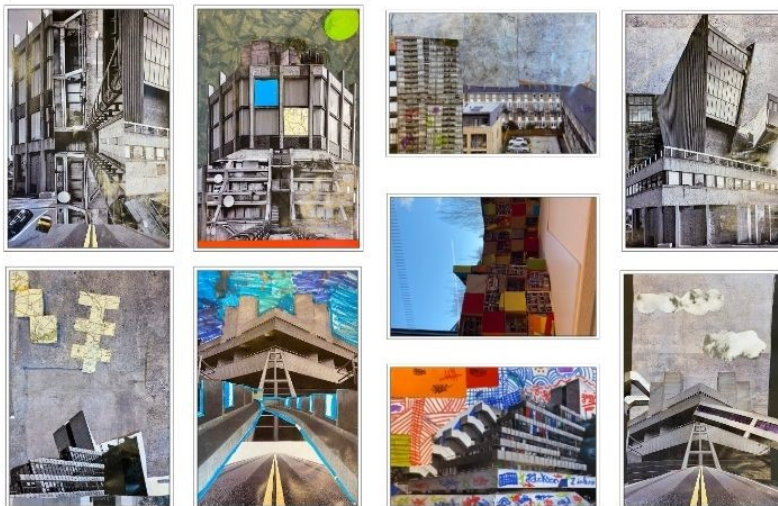
STAPLEFORD
GRANARY
MUSIC • ART • CULTURE

What a fantastic time we've had with Stapleford Primary pupils over the last couple of weeks, inspired by our current Mandy Payne exhibition. Mandy Payne is a Sheffield-based artist who paints wonderfully intricate images of unloved everyday buildings. She has a special interest in Brutalist architecture, and she paints directly on to concrete (and other materials) using spray paint and oils. For 13 years, her work focused on Park Hill, the Grade II* listed Sheffield council estate and one of Britain's largest examples of Brutalist architecture, now undergoing regeneration.

We talked with the pupils about the 'unloved' places that Mandy paints, social histories and Brutalist architecture. We looked at shapes, lines, materials, perspective, and Mandy's striking use of colour (a palette of greys and a 'pop' of something brighter). We learnt how to recognise Brutalist buildings in comparison to other types of architecture and watched a short film of Mandy working in her studio, mixing concrete and using spray paint, oils and tiny strips of masking to create her intricate pictures.



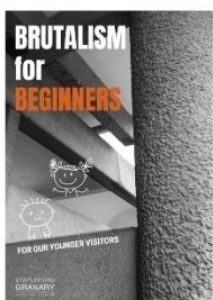
Years 4, 5, and 6 used collage to create their own Brutalist buildings, layering cut out architectural pictures in fascinating and imaginative ways. We loved their extraordinary compositions made up of multiple smaller parts, the care and attention which went into the cutting, sticking and matching of shapes, lines and perspective. Some have a sense of humour, and many make use of vivid colour very effectively. We have selected **9** to display on the walls of the Granary until 30 March; congratulations to Alice Pooley, Sioned Lee, Mathilda Salter, Charlie Day, Henry Cohen Serafin, Douglas Gunn, Haidi Ponari, Ethan Taylor and Bethan Horton! (their pictures are below)



Reception, years 1, 2, and 3 have created a fantastic colourful 3D model inspired by Park Hill. We learnt all about Mandy's work as a community dentist in Park Hill before she turned to a full time career in art. We looked at pictures of Park Hill back in the 50s and 60s, when it was built as an exciting, modern place for people to live. We talked about concrete as a building material, and how the buildings began to show signs of decay in the 80s, due to age, rain and neglect.

Our model (below left) shows different aspects of Park Hill. Pupils have decorated the boxes (the 'flats') using collage and their imaginations. They have selected images of 'old Park Hill' and 'new Park Hill' which is currently undergoing regeneration. 'New Park Hill' is marked by splashes of bright colour which can be seen both in the photographic images on the boxes and the strips of coloured paper. The shape of our model references the futuristic curved blocks of the original design.

All pupils were given a copy of our specially written '**Brutalism for Beginners**' booklet - we hope you've enjoyed it!



PLEASE DO DROP IN AND SEE OUR WORK! On display until 30 March