

10/10/2025



Stapleford Community  
Primary School

**A SCHOOL THAT CARES**

Curiosity . Ambition . Resilience . Excellence



CURIOSITY



AMBITION

CARE



RESILIENCE



EXCELLENCE

# Stapleford Newsletter

## Headteacher Message

Dear Parents and Carers,

It's been another busy and vibrant week at Stapleford!

Today we recognised World Mental Health Day by wearing yellow, with reminders about how important it is to look after our well-being. Mental health is a priority for us as a school, not only for our children but for our whole school community.

This week, our staff enjoyed a yoga session as part of our focus on staff well-being, and our children continue to be supported through a range of strategies including the 5 Point Scale, our ELSA provision, and of course, visits from our much-loved well-being dog, Ella.

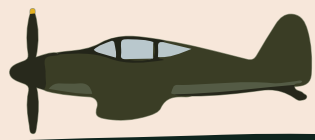
A big thank you to everyone for embracing these opportunities and for the ongoing support you give.  
Wishing you all a restful weekend.

Best Wishes

Jayne Hore

Headteacher

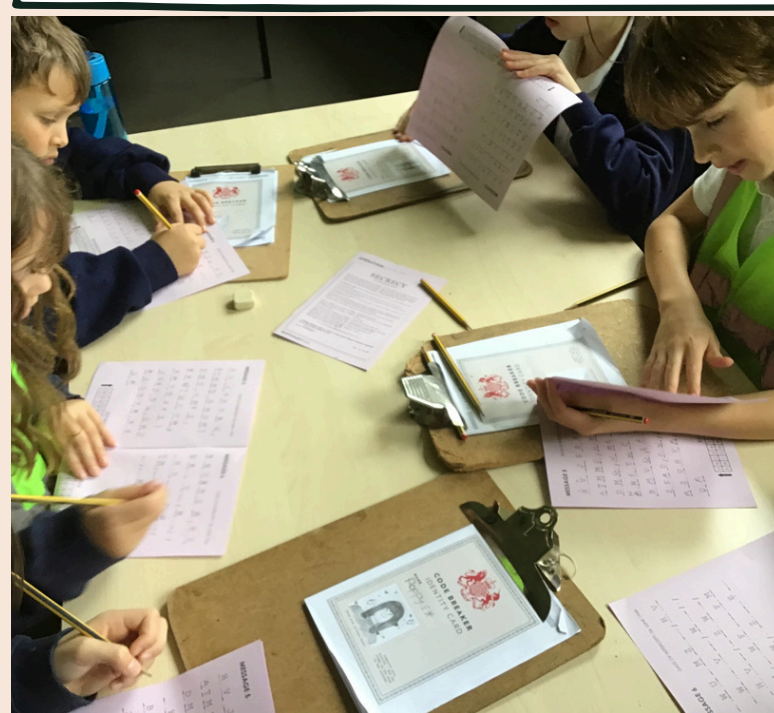




# Year 6 Visit to Bletchley Park



The Year 6 children visited Bletchley Park on Tuesday 7th October 2025. This was to enrich the children's learning about World War 2 by finding out about the amazing work of the codebreakers who worked there. Immersive films, interactive displays, museum collections and faithfully recreated WW2 rooms guided the children on a journey to discover the past at Bletchley Park.





## Antartica Flags

We're inviting all pupils to take part in an exciting competition to design a flag to send with an explorer to Antarctica! Flags can be hand-drawn or created on the computer and should be bright and colourful to stand out in the icy landscape. If your design is chosen, it will be sent to British Antarctic Survey volunteers in Antarctica, and you'll receive a photograph of your flag on display, along with a certificate. The closing date for entries is 20th October, so get designing!



## Harvest Donations

We would really appreciate donations of dried food, cans and similar items until 24th October. Please give these to your child's class teacher or to the school office. All donations will go to the John Huntingdon's Food Bank in Sawston. Please ensure items are in date before donating. John Huntingdon's have also requested items such as toilet roll and dog food



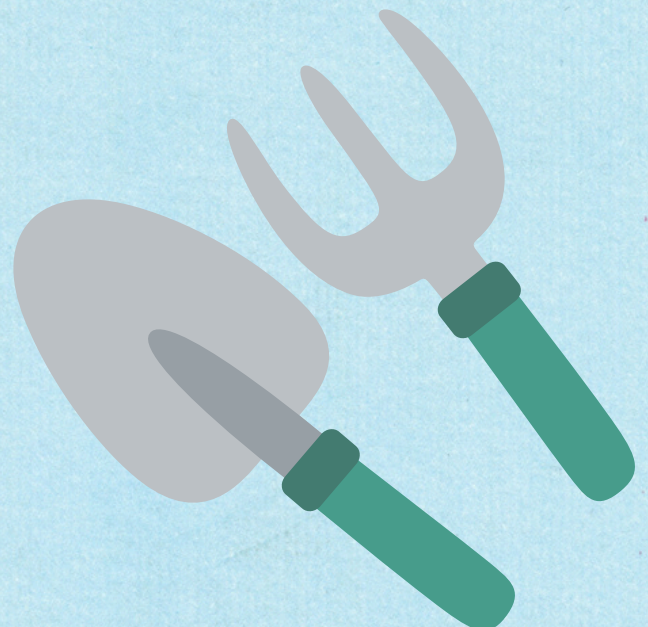
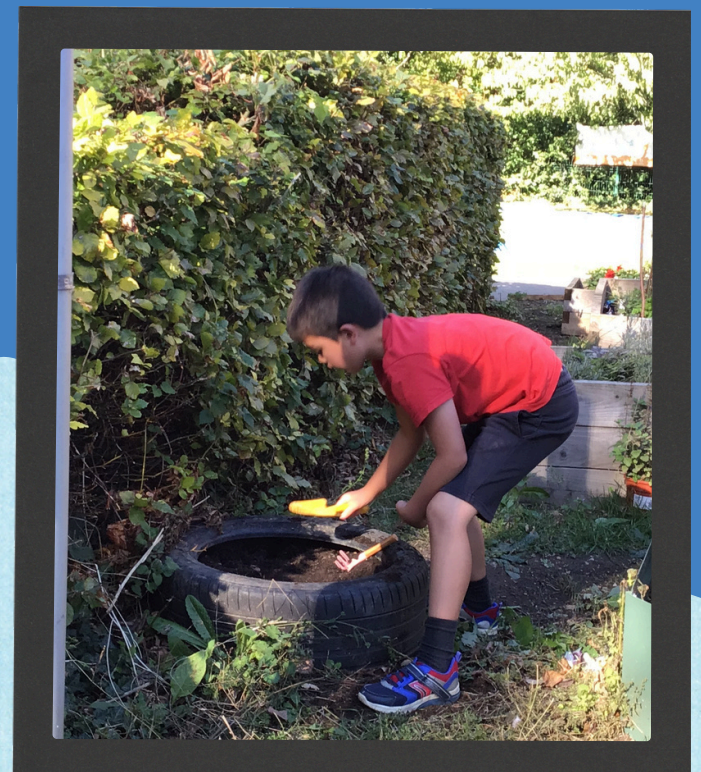
## Year 4 Garden

Can You Help? 🌻

Our Year 4 children have been busy in the school garden this week, planting spring bulbs to bring a burst of colour after the winter months. It's been wonderful to see their enthusiasm and care as they work together to create a beautiful space for everyone to enjoy.

We would love to invite parents and carers to get involved too! If you're able to spare an hour or two to help out in the garden, your support would make a real difference to the children and their project. We're also on the lookout for any donations of bulbs, gardening supplies, or even gardening expertise. If you have any resources or skills you'd be happy to share, we would be eternally grateful!

If you're able to help in any way, please let the school office know. Thank you for supporting our budding gardeners!





## Year 6 Science Investigation

Our Year 6 children have been investigating light and how we see things as part of their science learning. They explored how light travels from a light source to our eyes, or from a light source to an object and then into our eyes, helping us to see.

The photo shows one of their practical investigations in action, bringing this concept to life through hands-on learning.





# Year 5 Bug Village

Our Year 5 children have been making the most of their playtimes by working together to create intricate bug hotels. They have shown fantastic teamwork, creativity and care for nature as they designed and built their structures. The pictures show some of their brilliant creations, which we hope will be attracting plenty of mini-beast visitors!



## SEND Coffee Afternoon

Stapleford Primary School invites you to our first SEND Coffee Afternoon of the year. This will be an opportunity to meet with other parents of children with SEND as well as a chance to have an informal chat with the SEND Team.

This will be an information sharing afternoon, with a chance for you to gain a better understanding of how SEND works at Stapleford Primary School as well as a breakdown of the different services available and the current wait times for various referrals.

Wednesday October 15th, 2024 2:45pm—3:15pm



SEND Coffee Afternoon  
Wednesday 15<sup>th</sup> October,  
2.45 - 3.15pm in the Hall.

Followed by Open Classrooms  
3.30-4.15pm

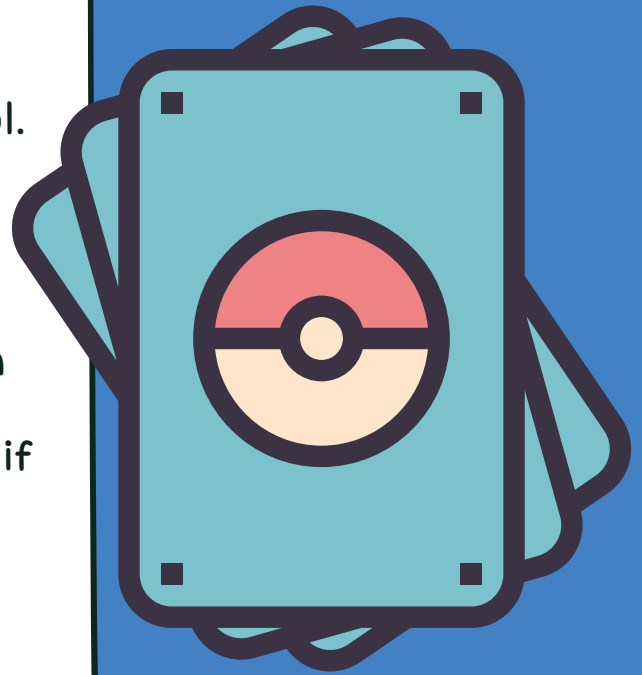


## Toys/Trading Cards

This is just a reminder of our whole-school rule that children should not bring toys or trading cards (such as Pokemon or football cards) into school.

Unfortunately, we have recently had a few behaviour incidents that have stemmed from items like these being brought into class. To help us maintain a focused and respectful learning environment, I would be very grateful if you could ensure that your child does not bring any toys or trading cards into school.

In some cases, children have been bringing these items in without parental knowledge, so we ask for your support in being extra vigilant in the mornings.



## Prayer Meeting

Prayer meeting for the school on Thursday 23rd October at 0900ish (straight after drop off) at the Harris home - 43 Bury Road Stapleford. All parents and carers welcome, feel free to bring pre-schoolers if necessary. Further details speak to Jo Harris / via school office.





## PTA News

We had a really successful PTA AGM this morning, and we'd like to say a huge thank you to our wonderful committee: Tracey, Rachael, Jenny and Laura - who are continuing in their roles, as well as to everyone who has offered their support. We're excited about the events coming up this term, including the Halloween Hunt (see poster for details) and the opportunity to purchase Christmas cards designed by the children - more information on this will follow soon.



**STAPLEFORD PTA  
HALLOWEEN HUNT**

 **Can you eScape FROM  
DRaCuLaS CaStLe GROUnD?** 

**24TH OCTOBER (FRIDAY)**

**SCHOOL BACK PLAYGROUND** 

**3.00 - 4PM**

**(4 - 4.30 PM AFTERSCHOOL CLUB)**

**£3 ENTRY - CASH/CARD**

**Solve clues to retrieve your treat!**

Parents/Carers to supervise their children  
throughout the activity

Stapleford Community School PTA  
Charity Number: 1151770

# Key Dates:

WEDNESDAY 15<sup>TH</sup>  
OCTOBER

Y2 Visit to Audley End House

WEDNESDAY 15<sup>TH</sup>  
OCTOBER

SEND Coffee Afternoon - 2.45-  
3.15pm - All parents welcome

WEDNESDAY 15<sup>TH</sup>  
OCTOBER

Open Classrooms, 3.30-4.15pm -  
All parents welcome

THURSDAY 16<sup>TH</sup>  
OCTOBER

Reception (2026) and Nursery  
Open Afternoon - pm

MONDAY 20<sup>TH</sup> -  
TUESDAY 21<sup>ST</sup>  
OCTOBER

Y5 Burwell Residential Visit

FRIDAY 24<sup>TH</sup>  
OCTOBER

Harvest Assembly

MONDAY 27<sup>TH</sup>  
OCTOBER - FRIDAY  
19<sup>TH</sup> OCTOBER

Half Term

THURSDAY 6<sup>TH</sup>  
NOVEMBER

Parents Evening (in person)

WEDNESDAY 12<sup>TH</sup>  
NOVEMBER

Parents Evening (virtual)





MONDAY 10TH -  
FRIDAY 14TH  
NOVEMBER

Anti-bullying week starting with  
Odd Socks Day (Monday 10th)

WEDNESDAY 19TH  
NOVEMBER

Open Classrooms, 3.30-4.15 (all  
parents welcome)

MONDAY 21ST  
NOVEMBER

Staff Training Day

## Hello Yellow#



Today we wore yellow to raise awareness  
of World Mental Health Day.

In assembly we discussed what is meant  
by mental health, why it is important to  
think about and strategies to support  
our mental health. We finished with a sing  
and a dance to the song "Happy" to  
boost our mental health at that time :)

## Local Community Events



www.cambridgecityfc.com

# OCTOBER CAMP

MON, TUES, WEDS  
27, 28, 29<sup>TH</sup> OCT

FOR BOYS  
& GIRLS

10AM - 2PM  
CAMBRIDGE CITY FC  
SAWSTON

REGISTER NOW

The poster features a torn-edge design with an orange background on the left and two photographs of children playing football on a green field on the right. The top left corner includes the Cambridge City FC crest and the Cambridge City Supporters Trust logo. The bottom left corner has three cartoon pumpkins. The text is in a mix of bold, sans-serif and distressed, hand-painted fonts.



nct  
Nearly New  
SALE

2-4 pm  
Saturday 11th October  
Cambridge Regional  
College

Baby & children's  
clothes, toys, books &  
equipment and more!

Scan me 

The poster has a bright yellow background. At the top is a white circle containing the 'nct' logo and the words 'Nearly New'. Below this, the word 'SALE' is written in large, colorful, 3D block letters. The event details are in a black, sans-serif font. At the bottom right, there is a QR code with an upward arrow in the center, and the text 'Scan me' followed by a small square icon.